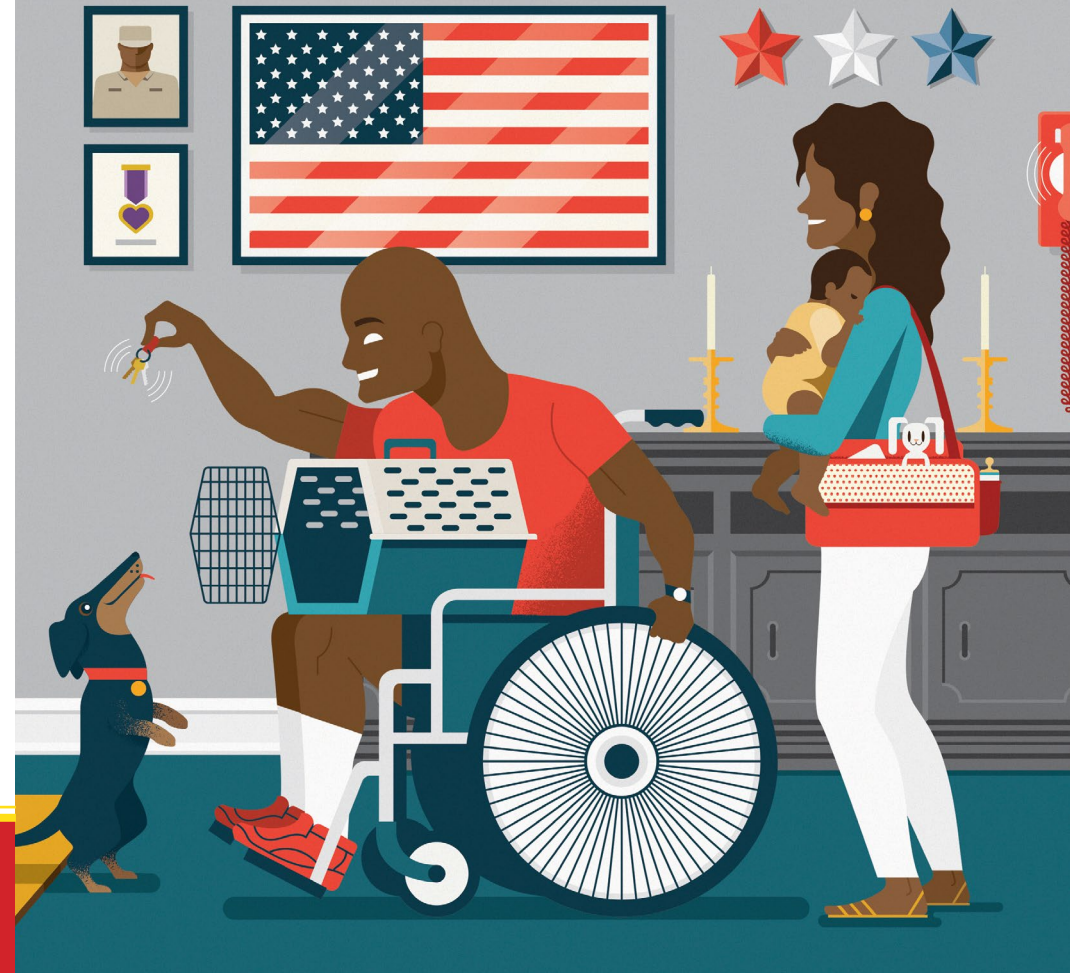




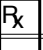




# Signing up is simple.

- 1** Call **3-1-1** or go to **specialneeds.nola.gov**. You can also call on behalf of a family member or neighbor.
- 2** Someone from the Health Department will **talk to you** about your needs.
- 3** You will receive a **letter** verifying your membership and your evacuation plan.
- 4** We will **contact you during emergencies** to see if you need help.



## SPECIAL NEEDS REGISTRY

# ARE YOU READY?

- |  |  |
|--|--|
| <input type="checkbox"/>  Prescriptions & Medications                   | <input type="checkbox"/>  Food for 3 Days               |
| <input type="checkbox"/>  Copy of Medical Records & Important Documents | <input type="checkbox"/>  Emergency Contact Information |
| <input type="checkbox"/>  3 Gallons of Water for each person            | <input type="checkbox"/>  Medical Equipment             |
|  | <input type="checkbox"/>  Glasses & Contacts            |

NEED TO UPDATE YOUR INFORMATION?

Call (504) 658-2558 // [ready.nola.gov](http://ready.nola.gov)



THE CITY OF NEW ORLEANS

# SPECIAL NEEDS REGISTRY

## Due to medical or mobility needs, you might require extra help during an emergency.

The City of New Orleans created the Special Needs Registry. It is a list of residents who have special needs that make it harder to respond during an emergency. The registry is mostly used for a hurricane evacuation. We might also use it during a power outage or boil water advisory to check on you and provide specific information based on your need.

Once you sign up, the New Orleans Health Department will work with you to create an evacuation plan. Based on your need, you might need to be picked up from your home in a bus. Or you might need an ambulance or other accommodation.

Remember, the first line of defense against a disaster is personal preparedness. The Special Needs Registry is not a guarantee of help during an emergency. Learn more about preparing for disasters at [ready.nola.gov](https://ready.nola.gov) or call 3-1-1.

Helping you stay ready year-round,  
**- THE TEAM AT NOLA READY**



## Sign up for the Special Needs Registry if you:



Use life support systems, like oxygen, a respirator, a ventilator, a pacemaker, or are insulin dependent



Have trouble walking, moving around, or have a prosthesis



Are blind, deaf, hard of hearing, or have trouble seeing



Are on dialysis



Have speech, intellectual, or mental health disabilities



Use service animals

**SIGN UP NOW**

