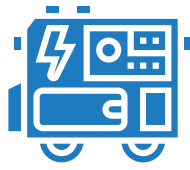


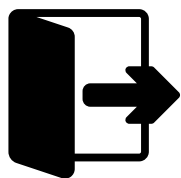
GENERATOR SAFETY



FOLLOW THE 20-20-20 RULE

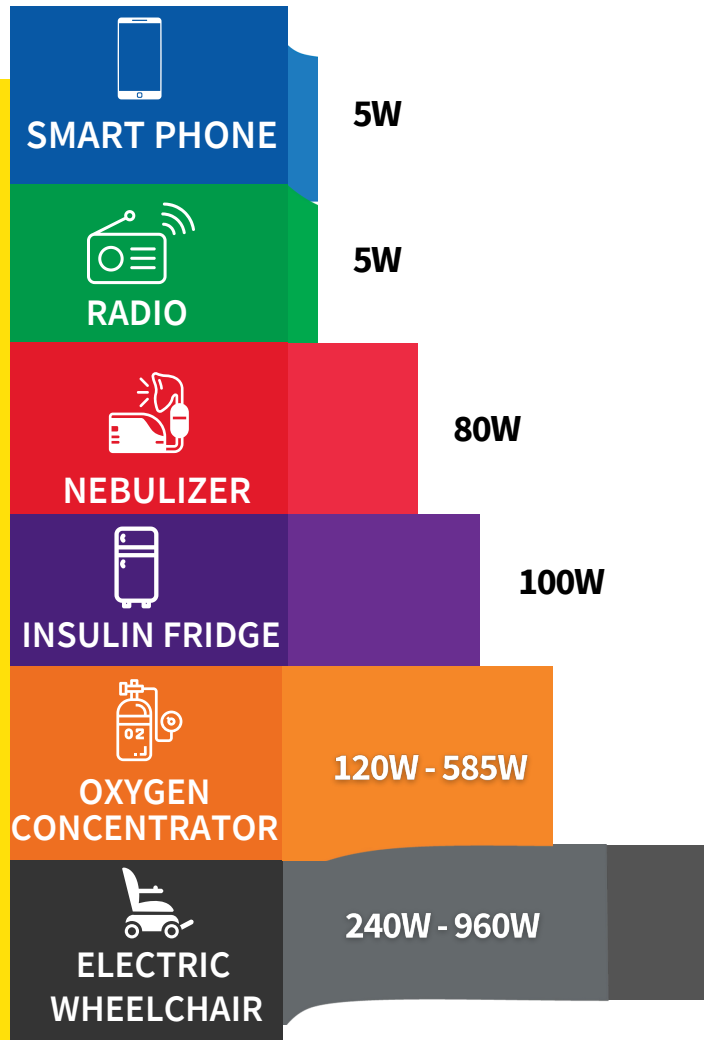
If you or a loved one uses a gas generator:

- ✓ Keep the generator at least **20 feet** away from your home.
- ✓ Turn off for at least **20 minutes** before refueling.
- ✓ Purchase a battery-operated **\$20 alarm** to detect carbon monoxide.



Leave your home **immediately** if your carbon monoxide detector goes off.

HOW MUCH ENERGY DOES IT TAKE TO CHARGE MY DEVICE?



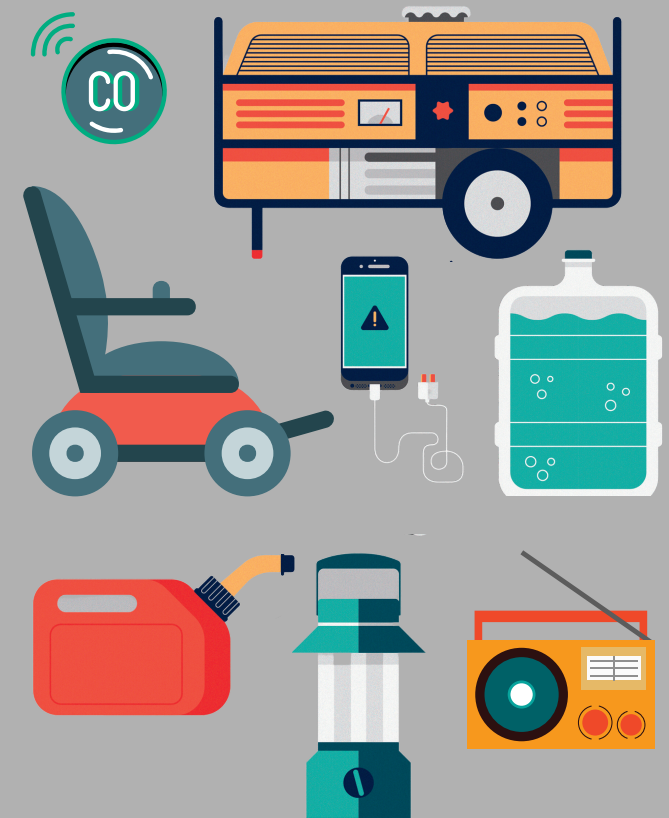
For more resources for people with disabilities, medical needs, and seniors, go to:

 ready.nola.gov/access



NOLA READY
THE CITY OF NEW ORLEANS

GUIDE TO POWER OUTAGES



Power outages can happen for many reasons, lasting for a few minutes or for days. Here are tips on what to do and how to prepare.

PREPAREDNESS TIPS:

Use **flashlights**, not candles.



Prepare for power outages by **fully charging devices before storms**.

Preserve **cell phone battery**. **Texting** saves battery life compared to **calling**.



Keep fridge doors closed. Most refrigerated food will keep in a closed fridge for several hours.

Keep **backup batteries or power banks** and **charging cables** for devices on hand.



Reach out to your **support networks** to make a plan (family, friends, neighbors, places of worship, etc.)

Identify **locations in your neighborhood with backup power** where you could charge your devices AND/OR refrigerate medication.



Emergency Resource Centers

During a significant power outage, the City of New Orleans ***might*** open **daytime cooling centers and/or charging stations** near you. There is no guarantee that any location would be activated at any time.



Sign up for emergency alerts for updates by texting **NOLAREADY** to **77295**.

NO East

- Joe Brown Recreation Center

Gentilly

- Milne Recreation Center

9th Ward

- Sanchez Multi-Service Center
- Stallings St. Claude Recreation Center

West Bank

- Cut-Off Community Center
- Arthur Monday Center
- Cita Dennis Hubbell Library
- Algiers Regional Library

Hollygrove

- Carrollton Multi-Service Center

Treme

- Treme Recreation Community Center

City Park

- Gernon Brown Recreation Center

Uptown

- Rosenwald Rec Center (Gert Town)
- Lyons Recreation Center (Touro)
- Milton H. Latter Library
- Nix Public Library

For more info, go to ready.nola.gov/plan/power-outage